

HEAVY HARDWARE CATALOG

Quality. Substance. Style.

HMI

INNOVATORS IN GLASS

Why HMI *hinges?*

Since 1946, HMI has consistently striven for *technical excellence* in our products. Our deep *knowledge* of shower glass and hardware is evident within our *collection* of *products that last*.

- Lifetime Warranty
- Shim Kit included with all wall mount hinges (*excluding adjustable)
- Both Allen & Phillips head screws for hinge plates
- All hinges constructed of brass material
- Textured gaskets to accommodate 10mm & 12mm glass
- Square style internal springs (*excluding adjustable)
3x stronger than industry standard
- Test rating exceeds industry standard
- H Plate design on all wall mount hinges for closer tolerance installations
- Full CNC hinge body cylinders
- 5° reversible hinge pin
- Protective plastic covering around inner hinge assembly
- Bump stops on both opening & closing side of hinge (*excluding adjustable)
- Removable mouse ear pins on all heavy style hinges



Hinges at a *glance*

HMI Heavy Glass hinges are designed with 2 distinct edge profiles - *beveled and squared*. Please refer to table contents for a complete list of hinge and hardware options.



GENISIS
(HGTWS)



CASSINI
(HPVT)



VIKING
(HGTWSH)



PIONEER
(HGTW)



CALYPSO
(HGTWH)



PHOENIX
(HPVT)

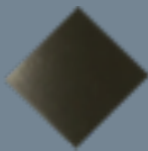


SENIOR PHOENIX
(SRHPVT)

Hardware Finishes:



Chrome



Oil Rubbed
Bronze



Gold



Matte
Black



Champagne
Bronze



Brushed
Nickel



Polished
Nickel



Roman
Bronze

Table of Contents

Why HMI Hinges?	2
At A Glance	3
Hinges Dot Matrix	5
Clamps & Clips Dot Matrix	6
Pulls Dot Matrix	7
Towel Bars Dot Matrix	8
Knobs Dot Matrix	8
Hooks Dot Matrix	8
Headers Dot Matrix	9
U-Channel Dot Matrix	9

PIONEER

PIR037	10
PIR337	11
PIR044	12
PIR045	13
PIR180	14
PIR537	15

GENISIS

GES037	16
GES337	17
GES044	18
GES045	19
GES180	20

CALYPSO

CAL037	21
CAL337	22
CAL537	23
CAL044	24
CAL180	25

VIKING

VIK037	26
VIK537	27
VIK044	28
VIK180	29

PHOENIX

PHX01	30
-------	----

SENIOR PHOENIX

SRPHX01	31
---------	----

CASSINI

CAS01	32
-------	----

CLAMPS & CLIPS

HMIB186	33
HMIB188	34
HMIBU4	35
HMIB90	36
HMIB135	37

HMIB180	38
HMIB190	39
HMISU4	39
HMIS90	40
HMIS180	41
HMIS190	38
HMIND4	42
HMISL90	43
HMIS37R	44
HMIS37L	45
HMIS91	46
HMISL135	47

PULLS

HMIB6X6 & HMIB8X8	48
HMI6SM & HMIB8X8	49
HMILP6X6	50
HMILP8X8	51
HMICR6X6	52
HMISQ6X6	53
HMISQ8X8	54

WASHERS

HMI30WK	55
---------	----

TOWEL BARS

HMITB16, HMITB18, HMITB20, HMITB22, HMITB24, HMITB27 & HMITB30	56
HMIBTB18X18 & HMITB24X24	57
HMIBTB6X18, HMIBTB6X20, HMIBTB6X22, & HMIBTB6X24	58

HOOKS

HMIRH	59
-------	----

KNOBS

HMIKSM	60
HMIKCBTB	61

HEADERS

ZSS4104A	62
CHGCHK144 & CHGCHK72	63
ZSS4102	64
ZSS4103	65
ZSS4104	66
ZSS4504	67
ZSS5103	68
ZSS5104	69

HEADER BRACKETS

C4101-A, C4101-135, C4101-90 & C4101-W	62
---	----

PRODUCT NAME	PART #	CH	DA	GO	MB	CB	NI	PN	RO
STANDARD HINGES									
PIONEER - Beveled Edge	PIR037	◆	◆	◆	◆	◆	◆	◆	◆
	PIR045	◆	◆	◆		◆	◆		◆
	PIR180	◆	◆	◆	◆	◆	◆	◆	◆
	PIR537	◆	◆				◆		◆
	PIR337	◆	◆	◆			◆		◆
	PIR044	◆	◆	◆	◆		◆	◆	◆
GENESIS - Square Edge	GES037	◆	◆	◆	◆	◆	◆	◆	◆
	GES045	◆	◆			◆	◆		
	GES180	◆	◆		◆	◆	◆	◆	◆
	GES337	◆	◆	◆	◆		◆		
	GES044	◆	◆	◆	◆		◆	◆	
HEAVY HINGES									
CALYPSO - Beveled Edge	CAL037	◆	◆	◆	◆	◆	◆	◆	◆
	CAL180	◆	◆		◆	◆	◆	◆	
	CAL337	◆	◆				◆		
	CAL537	◆	◆	◆	◆		◆		◆
	CAL044	◆	◆	◆	◆		◆	◆	◆
VIKING - Square Edge	VIK037	◆	◆	◆	◆	◆	◆	◆	◆
	VIK180	◆	◆		◆	◆	◆	◆	
	VIK537	◆	◆	◆			◆		◆
	VIK044	◆	◆	◆	◆		◆	◆	◆
PIVOT HINGES									
PHOENIX - Beveled Edge	PHX01	◆	◆		◆		◆	◆	◆
SENIOR PHOENIX - Beveled Edge	SRPHX01	◆	◆		◆		◆	◆	◆
CASSINI - Square Edge	CAS01	◆	◆		◆		◆	◆	◆

[illegible]

7

8

PIONEER



Polished Nickel

STYLE PIR037

(CHG HGTW)

Standard Hinge

Beveled Edge

- Glazing Thickness: 5/16" to 1/2"
- Dimensions: 3 1/2"h x 2 3/16"w
- Material: Brass
- Maximum Door Weights:
 - 2 Hinges - 80 lbs.
 - 3 Hinges - 120 lbs.
- Maximum Door Widths:
 - 2 Hinges - 28"
 - 3 Hinges - 32"
- Self-Centering: yes with reversible 5° pivot pin
- Wall outage shims included

*Lifetime warranty for residential
3 year warranty for hospitality*



Oil Rubbed Bronze



Brushed Nickel



Gold



Chrome



Roman Bronze



Matte Black



Champagne Bronze



Oil Rubbed Bronze Painted



Yes, every HMI hinge includes our top of the line ribbed gasket for better grip on glass.

Make sure to pair with HMI *handles* and *clips*.

PIONEER



Brushed Nickel

STYLE PIR337

(CHG HGTWADJ)
Adjustable Hinge
Beveled Edge

- Glazing Thickness: 5/16" to 1/2"
- Dimensions: 3 1/2"h x 2 3/16"w
- Material: Brass
- Maximum Door Weights:
 - 2 Hinges - 80 lbs.
 - 3 Hinges - 120 lbs.
- Maximum Door Widths:
 - 2 Hinges - 28"
 - 3 Hinges - 32"
- Adjustable to Any Angle up to 90° Without Removing Door

*Lifetime warranty for residential
3 year warranty for hospitality*



Oil Rubbed
Bronze



Gold



Chrome



Roman Bronze



Matte Black



Yes, every HMI hinge includes our top of the line ribbed gasket for better grip on glass.

Make sure to pair with HMI *handles* and *clips*.

PIONEER



Polished Nickel

STYLE PIR044

(CHG HGTWOP)
Standard Hinge
Beveled Edge

- Glazing Thickness: 5/16" to 1/2"
- Dimensions: 3 1/2"h x 2 3/16"w
- Material: Brass
- Maximum Door Weights:
 - 2 Hinges - 80 lbs.
 - 3 Hinges - 120 lbs.
- Maximum Door Widths:
 - 2 Hinges - 28"
 - 3 Hinges - 32"
- Self-Centering: yes with reversible 5° pivot pins

*Lifetime warranty for residential
3 year warranty for hospitality*



Oil Rubbed Bronze



Brushed Nickel



Gold



Chrome



Roman Bronze



Matte Black



Yes, every HMI hinge includes our top of the line ribbed gasket for better grip on glass.

Make sure to pair with HMI *handles* and *clips*.

PIONEER

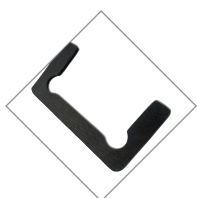
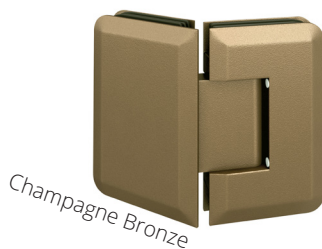


STYLE PIR045

(CHG H135GTG)
Standard Hinge
Beveled Edge

- Glazing Thickness: 5/16" to 1/2"
- Dimensions: 3 1/2"h x 2 3/16"w
- Material: Brass
- Maximum Door Weights:
 - 2 Hinges - 80 lbs.
 - 3 Hinges - 120 lbs.
- Maximum Door Widths:
 - 2 Hinges - 28"
 - 3 Hinges - 32"
- Self-Centering: yes with reversible 5° pivot pin
- Wall outage shims included

*Lifetime warranty for residential
3 year warranty for hospitality*



Yes, every HMI hinge includes our top of the line ribbed gasket for better grip on glass.

Make sure to pair with HMI *handles* and *clips*. | See page 00 for Technical Specifications.

PIONEER



STYLE PIR180

(CHG H180GTG)
Standard Hinge
Beveled Edge

- Glazing Thickness: 5/16" to 1/2"
- Dimensions: 3 1/2"h x 2 3/16"w
- Material: Brass
- Maximum Door Weights:
 - 2 Hinges - 80 lbs.
 - 3 Hinges - 120 lbs.
- Maximum Door Widths:
 - 2 Hinges - 28"
 - 3 Hinges - 32"
- Self-Centering: yes with reversible 5° pivot pin
- Wall outage shims included

*Lifetime warranty for residential
3 year warranty for hospitality*



Oil Rubbed Bronze



Brushed Nickel



Gold



Chrome



Champagne Bronze



Roman Bronze



Matte Black



Yes, every HMI hinge includes our top of the line ribbed gasket for better grip on glass.

Make sure to pair with HMI *handles* and *clips*.

PIONEER



Brushed Nickel

STYLE PIR537

(CHG HGTW5)

Standard Hinge

Beveled Edge

5° Pre-set Hinge

- Glazing Thickness: 5/16" to 1/2"
- Dimensions: 3 1/2"h x 2 3/16"w
- Material: Brass
- Maximum Door Weights:
 - 2 Hinges - 80 lbs.
 - 3 Hinges - 120 lbs.
- Maximum Door Widths:
 - 2 Hinges - 28"
 - 3 Hinges - 32"
- Self-Centering: yes with reversible 5° pivot pin
- Wall outage shims included

*Lifetime warranty for residential
3 year warranty for hospitality*



Oil Rubbed
Bronze



Chrome



Roman Bronze



Yes, every HMI hinge includes our top of the line ribbed gasket for better grip on glass.

Make sure to pair with HMI *handles* and *clips*.

HMI
INNOVATORS IN GLASS

GENESIS



STYLE GES037

(CHG HGTWS)

Squared Edge

- Glazing Thickness: 5/16" to 1/2"
- Dimensions: 3 1/2"h x 2 3/16"w
- Material: Brass
- Maximum Door Weights:
 - 2 Hinges - 80 lbs.
 - 3 Hinges - 120 lbs.
- Maximum Door Widths:
 - 2 Hinges - 28"
 - 3 Hinges - 32"
- Self-Centering: yes with reversible 5° pivot pin
- Wall outage shims included

*Lifetime warranty for residential
3 year warranty for hospitality*



Yes, every HMI hinge includes our top of the line ribbed gasket for better grip on glass.

Make sure to pair with HMI *handles* and *clips*.

GENESIS



Brushed Nickel

STYLE GES337

(CHG HGTWSADJ)
Standard Hinge
Squared Edge
Adjustable

- Glazing Thickness: 5/16" to 1/2"
- Dimensions: 3 1/2"h x 2 3/16"w
- Material: Brass
- Maximum Door Weights:
 - 2 Hinges - 80 lbs.
 - 3 Hinges - 120 lbs.
- Maximum Door Widths:
 - 2 Hinges - 28"
 - 3 Hinges - 32"
- Self-Centering: yes
- Adjustable to Any Angle up to 90° Without Removing Door

*Lifetime warranty for residential
3 year warranty for hospitality*



Oil Rubbed
Bronze



Chrome



Gold



Matte Black



Yes, every HMI hinge includes our top of the line ribbed gasket for better grip on glass.

Make sure to pair with HMI *handles* and *clips*.

GENESIS



STYLE GES044

(CHG HGTWOPS)

Standard Hinge

Squared Edge

Offset Back Plate Hinge

- Glazing Thickness: 5/16" to 1/2"
- Dimensions: 3 1/2"h x 2 3/16"w
- Material: Brass
- Maximum Door Weights:
 - 2 Hinges - 80 lbs.
 - 3 Hinges - 120 lbs.
- Maximum Door Widths:
 - 2 Hinges - 28"
 - 3 Hinges - 32"
- Self-Centering: yes with reversible 5° pivot pin
- Wall outage shims included

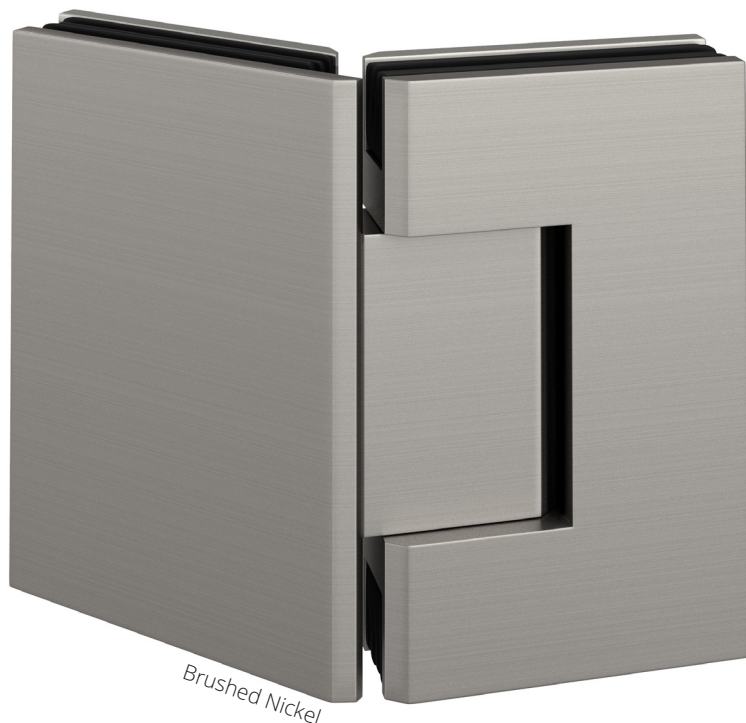
*Lifetime warranty for residential
3 year warranty for hospitality*



Yes, every HMI hinge includes our top of the line ribbed gasket for better grip on glass.

Make sure to pair with HMI *handles* and *clips*.

GENESIS



STYLE GES045

(CHG H135GTGS)

Standard Hinge

Squared Edge

135° Hinge

- Glazing Thickness: 5/16" to 1/2"
- Dimensions: 3 1/2"h x 2 3/16"w
- Material: Brass
- Maximum Door Weights:
 - 2 Hinges - 80 lbs.
 - 3 Hinges - 120 lbs.
- Maximum Door Widths:
 - 2 Hinges - 28"
 - 3 Hinges - 32"
- Self-Centering: yes with reversible 5° pivot pin
- Wall outage shims included

*Lifetime warranty for residential
3 year warranty for hospitality*



Yes, every HMI hinge includes our top of the line ribbed gasket for better grip on glass.

Make sure to pair with HMI *handles* and *clips*.

GENESIS



STYLE GES180

(CHG H180GTGS)

Standard Hinge

Squared Edge

180° Glass to Glass Hinge

- Glazing Thickness: 5/16" to 1/2"
- Dimensions: 3 1/2"h x 2 3/16"w
- Material: Brass
- Maximum Door Weights:
 - 2 Hinges - 80 lbs.
 - 3 Hinges - 120 lbs.
- Maximum Door Widths:
 - 2 Hinges - 28"
 - 3 Hinges - 32"
- Self-Centering: yes with reversible 5° pivot pin

*Lifetime warranty for residential
3 year warranty for hospitality*



Yes, every HMI hinge includes our top of the line ribbed gasket for better grip on glass.

Make sure to pair with HMI *handles* and *clips*.

CALYPSO



STYLE CAL037

(CHG HGTWH)
Heavy Hinge
Beveled Edge

- Glazing Thickness: 3/8" to 1/2"
- Dimensions: 3 15/16"h x 2 1/4"w
- Material: Brass
- Maximum Door Weights:
 - 2 Hinges - 110 lbs.
 - 3 Hinges - 140 lbs.
- Maximum Door Widths: 36"
- Self-Centering: yes with reversible 5° pivot pin
- Wall outage shims included

*Lifetime warranty for residential
3 year warranty for hospitality*



Yes, every HMI hinge includes our top of the line ribbed gasket for better grip on glass.

Make sure to pair with HMI *handles* and *clips*.

CALYPSO



STYLE CAL337

(CHG HGTWHADJ)

Heavy Hinge

Beveled Edge

5° Pre-set Heavy Hinge

- Glazing Thickness: 3/8" to 1/2"
- Dimensions: 3 15/16"h x 2 5/16"w
- Material: Brass
- Maximum Door Weights:
 - 2 Hinges - 110 lbs.
 - 3 Hinges - 140 lbs.
- Maximum Door Widths: 36"
- Self-Centering: yes with reversible 5° pivot pin
- Wall outage shims included

*Lifetime warranty for residential
3 year warranty for hospitality*



Yes, every HMI hinge includes our top of the line ribbed gasket for better grip on glass.

Make sure to pair with HMI *handles* and *clips*.

CALYPSO



Brushed Nickel

STYLE CAL537

(CHG HGTWH5)

Heavy Hinge

Beveled Edge

5° Pre-set Heavy Hinge

- Glazing Thickness: 3/8" to 1/2"
- Dimensions: 3 15/16"h x 2 5/16"w
- Material: Brass
- Maximum Door Weights:
 - 2 Hinges - 110 lbs.
 - 3 Hinges - 140 lbs.
- Maximum Door Widths: 36"
- Self-Centering: yes with reversible 5° pivot pin
- Wall outage shims included

*Lifetime warranty for residential
3 year warranty for hospitality*



Oil Rubbed
Bronze



Chrome



Roman Bronze



Gold



Matte Black



Yes, every HMI hinge includes our top of the line ribbed gasket for better grip on glass.

Make sure to pair with HMI *handles* and *clips*.

CALYPSO



Polished Nickel

STYLE CAL044

(CHG HGTWOPH)

Heavy Hinge

Beveled Edge

Offset Back Plate

- Glazing Thickness: 3/8" to 1/2"
- Dimensions: 3 15/16"h x 2 1/4"w
- Material: Brass
- Maximum Door Weights:
 - 2 Hinges - 100 lbs.
 - 3 Hinges - 130 lbs.
- Maximum Door Widths:
 - 1/2" Glass - 32"
 - 3/8" Glass - 34"
- Self-Centering: yes with reversible 5° pivot pin
- Wall outage shims included

*Lifetime warranty for residential
3 year warranty for hospitality*



Oil Rubbed
Bronze



Brushed Nickel



Gold



Chrome



Roman Bronze



Matte Black



Yes, every HMI hinge includes our top of the line ribbed gasket for better grip on glass.

Make sure to pair with HMI *handles* and *clips*.

CALYPSO



Polished Nickel

STYLE CAL180

(CHG H180GTGH)

Heavy Hinge

Beveled Edge

180° Glass to Glass

- Glazing Thickness: 3/8" to 1/2"
- Dimensions: 3 15/16"h x 2 1/4"w
- Material: Brass
- Maximum Door Weights:
 - 2 Hinges - 110 lbs.
 - 3 Hinges - 140 lbs.
- Maximum Door Widths: 36"
- Self-Centering: yes with reversible 5° pivot pin

*Lifetime warranty for residential
3 year warranty for hospitality*



Oil Rubbed
Bronze



Brushed Nickel



Champagne Bronze



Chrome



Matte Black



Yes, every HMI hinge includes our top of the line ribbed gasket for better grip on glass.

Make sure to pair with HMI *handles* and *clips*.

VIKING



STYLE VIK037

(CHG HGTWSH)

Heavy Hinge

Squared Edge

- Glazing Thickness: 3/8" to 1/2"
- Dimensions: 3 15/16"h x 2 1/4"w
- Material: Brass
- Maximum Door Weights:
 - 2 Hinges - 110 lbs.
 - 3 Hinges - 140 lbs.
- Maximum Door Widths: 36"
- Self-Centering: yes with reversible 5° pivot pin
- Wall outage shims included

*Lifetime warranty for residential
3 year warranty for hospitality*



Oil Rubbed
Bronze



Brushed Nickel



Gold



Chrome



Roman Bronze



Champagne
Bronze



Matte Black



Yes, every HMI hinge includes our top of the line ribbed gasket for better grip on glass.

Make sure to pair with HMI *handles* and *clips*.

VIKING



Brushed Nickel

STYLE VIK537

(CHG HGTWSH5)

Heavy Hinge

Squared Edge

5° Pre-set Heavy Hinge

- Glazing Thickness: 1/2"
- Dimensions: 3 15/16"h x 2 1/4"w
- Material: Brass
- Maximum Door Weights:
 - 2 Hinges - 110 lbs.
 - 3 Hinges - 140 lbs.
- Maximum Door Widths: 36"
- Self-Centering: yes

*Lifetime warranty for residential
3 year warranty for hospitality*



Oil Rubbed
Bronze

Gold

Chrome

Roman Bronze

Champagne
Bronze

Matte Black



Yes, every HMI hinge includes our top of the line ribbed gasket for better grip on glass.

Make sure to pair with HMI *handles* and *clips*.

VIKING



STYLE VIK044

(CHG HGTWOPSH)

Heavy Hinge

Squared Edge

Offset Back Plate

- Glazing Thickness: 3/8" to 1/2"
- Dimensions: 3 15/16"h x 2 1/4"w
- Material: Brass
- Maximum Door Weights:
 - 2 Hinges - 100 lbs.
 - 3 Hinges - 130 lbs.
- Maximum Door Widths:
 - 1/2" Glass - 32"
 - 3/8" Glass - 34"
- Self-Centering: yes with reversible 5° pivot pin
- Wall outage shims included

*Lifetime warranty for residential
3 year warranty for hospitality*



Yes, every HMI hinge includes our top of the line ribbed gasket for better grip on glass.

Make sure to pair with HMI *handles* and *clips*.

VIKING



STYLE VIK180

(CHG H180GTGSH)

Heavy Hinge

Squared Edge

1800 Glass to Glass

- Glazing Thickness: 3/8" to 1/2"
- Dimensions: 3 15/16"h x 2 1/4"w
- Material: Brass
- Maximum Door Weights:
 - 2 Hinges - 110 lbs.
 - 3 Hinges - 140 lbs.
- Maximum Door Widths: 36"
- Self-Centering: yes with reversible 5° pivot pin
- Wall outage shims included

*Lifetime warranty for residential
3 year warranty for hospitality*



Yes, every HMI hinge includes our top of the line ribbed gasket for better grip on glass.

Make sure to pair with HMI *handles* and *clips*.

PHOENIX



Polished Nickel

STYLE PHX01

(CHG HPVT)

Pivot Hinge

Beveled Edge

Top or Bottom Pivot

- Glazing Thickness: 5/16" and 3/8"
- Material: Brass
- Maximum Door Weights:
2 Hinges - 100 lbs.
- Maximum Door Widths: 31"
- Self-Centering: yes

*Lifetime warranty for residential
3 year warranty for hospitality*



Oil Rubbed Bronze



Brushed Nickel



Roman Bronze



Chrome



Matte Black



Yes, every HMI hinge includes our top of the line ribbed gasket for better grip on glass.

Make sure to pair with HMI *handles* and *clips*. | See page 00 for Technical Specifications.

SENIOR PHOENIX



Polished Nickel

STYLE SRPHX01

(SR HPVT)

Pivot Hinge

Beveled Edge

Heavy Duty Top or Bottom

- Glazing Thickness: 1/2"
- Dimensions: 2 5/8"h x 4 3/4"w
- Material: Brass
- Maximum Door Weights: 145 lbs.
- Maximum Door Widths: 36"
- Self-Centering: yes

*Lifetime warranty for residential
3 year warranty for hospitality*



Oil Rubbed Bronze



Brushed Nickel



Roman Bronze



Chrome



Matte Black



Yes, every HMI hinge includes our top of the line ribbed gasket for better grip on glass.

Make sure to pair with HMI *handles* and *clips*.

CASSINI



Polished Nickel

STYLE CAS01

(CHG HPVTS)

Pivot Hinge

Squared Edge

Top or Bottom

- Glazing Thickness: 5/16" to 3/8"
- Dimensions: 2"h x 3 5/8"w
- Material: Brass
- Maximum Door Weights: 100 lbs.
- Maximum Door Widths: 31"
- Self-Centering: yes
- Wall outage shims included

*Lifetime warranty for residential
3 year warranty for hospitality*



Oil Rubbed Bronze



Brushed Nickel



Roman Bronze



Chrome



Matte Black



Yes, every HMI hinge includes our top of the line ribbed gasket for better grip on glass.

Make sure to pair with HMI *handles* and *clips*.



Polished Nickel

STYLE HMIB186

(CHG CTGTW)

Moveable Transom Clamp
Beveled Edge

- Glazing Thickness: 3/8" to 1/2"
- Dimensions: 2" x 2"
- Material: Brass
- Mounting Type:
Wall Mount or Glass to Glass
when used as a set
- Wall outage shims included

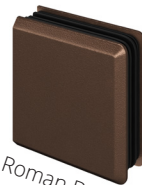
*Lifetime warranty for residential
3 year warranty for hospitality*



Oil Rubbed Bronze



Brushed Nickel



Roman Bronze



Chrome



Matte Black



Gold

Make sure to pair with HMI *hinges* and *handles*.

HMI

STYLE HMIB188

(CHG CT180GTG)

Moveable Transom Clamp
Beveled Edge



Polished Nickel

- Glazing Thickness: 3/8" to 1/2"
- Dimensions: 2" x 4 1/16"
- Material: Brass
- Mounting Type: Glass to Glass
- Wall outage shims included

*Lifetime warranty for residential
3 year warranty for hospitality*



Oil Rubbed Bronze



Brushed Nickel



Roman Bronze



Chrome



Matte Black



Gold

Make sure to pair with HMI *hinges* and *handles*.

HMI
INNOVATORS IN GLASS

STYLE HMIBU4

(CHG CGTW)

Wall Mount Clip

Beveled Edge

- Glazing Thickness: 3/8" to 1/2"
- Dimensions: 2" x 2"
- Material: Brass
- Mounting Type: Glass to Wall

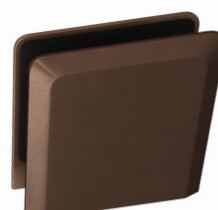
*Lifetime warranty for residential
3 year warranty for hospitality*



Oil Rubbed Bronze



Brushed Nickel



Roman Bronze



Gold



Chrome

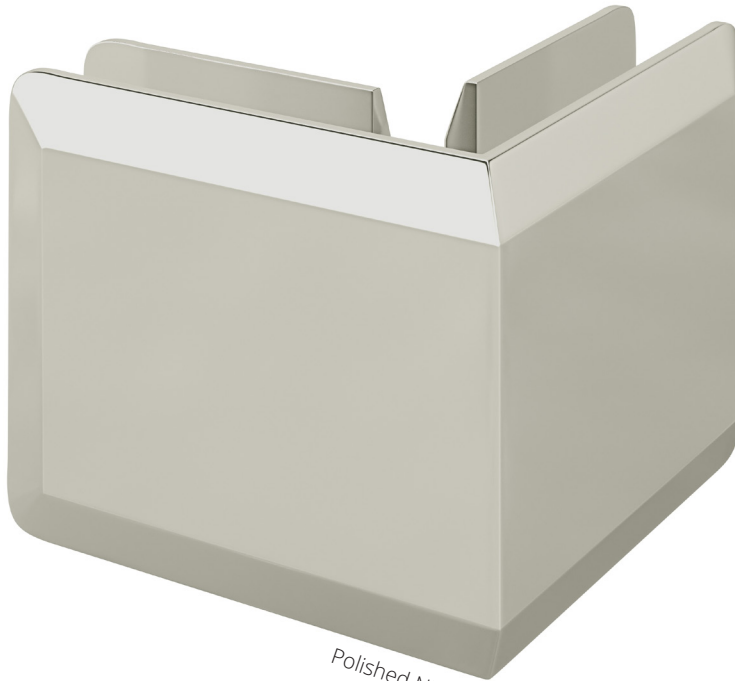


Champagne Bronze



Matte Black

Make sure to pair with HMI *hinges* and *handles*.



Polished Nickel

STYLE HMIB90

(CHG C90GTG)

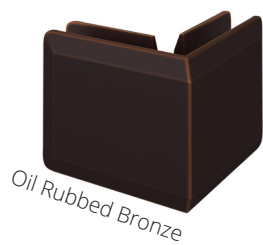
Clip

Beveled Edge

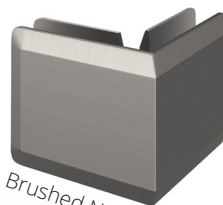
90° Glass to Glass

- Glazing Thickness: 3/8" to 1/2"
- Dimensions: 2 1/2" x 2 1/2" x 2"
- Material: Brass
- Mounting Type: Glass to Glass

*Lifetime warranty for residential
3 year warranty for hospitality*



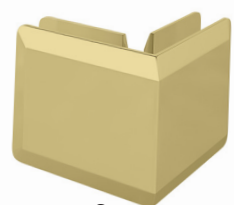
Oil Rubbed Bronze



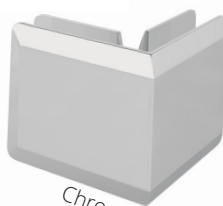
Brushed Nickel



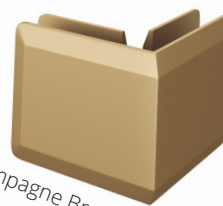
Roman Bronze



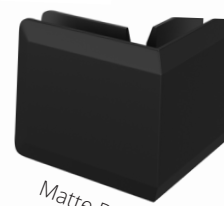
Gold



Chrome



Champagne Bronze



Matte Black

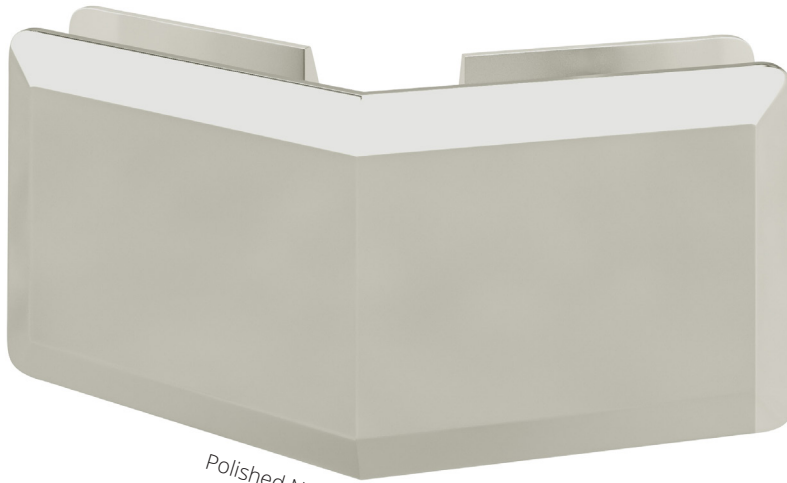
STYLE HMIB135

(CHG C135GTG)

Clip

Beveled Edge

135° Glass to Glass



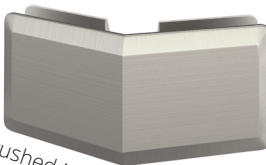
Polished Nickel

- Glazing Thickness: 3/8" to 1/2"
- Dimensions: 2 1/2" x 2 1/2" x 2"
- Material: Brass
- Mounting Type: Glass to Glass

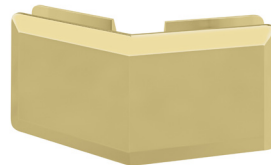
*Lifetime warranty for residential
3 year warranty for hospitality*



Oil Rubbed Bronze



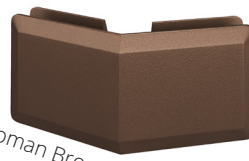
Brushed Nickel



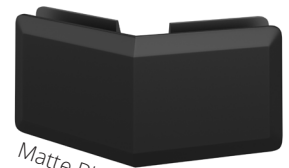
Gold



Chrome



Roman Bronze



Matte Black

Make sure to pair with HMI *hinges* and *handles*.

HMI



Polished Nickel

STYLE HMIB180

(CHG C180GTG)

Clip

Beveled Edge

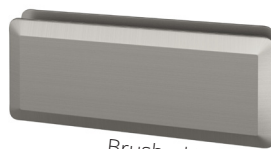
180° Glass to Glass

- Glazing Thickness: 3/8" to 1/2"
- Dimensions: 2" x 5"
- Material: Brass
- Mounting Type: Glass to Glass

*Lifetime warranty for residential
3 year warranty for hospitality*



Oil Rubbed Bronze



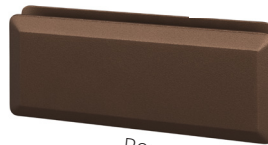
Brushed Nickel



Gold



Chrome



Roman Bronze



Matte Black

Make sure to pair with HMI *handles* and *clips*.



HMI B190
Brushed Nickel



HMI S190
Polished Nickel

STYLES:

HMI S190
(CHGHWCS)

HMI B190
(CHGHWCS)

Beveled & Square Clamps

- Glass Thickness: 5/16" to 1/2"
- Material: Solid Brass
- Includes: Gaskets & Mounting Screws
Hole Diameter
- Required: Two 3/4" holes per panel

*Lifetime warranty for residential
3 year warranty for hospitality*

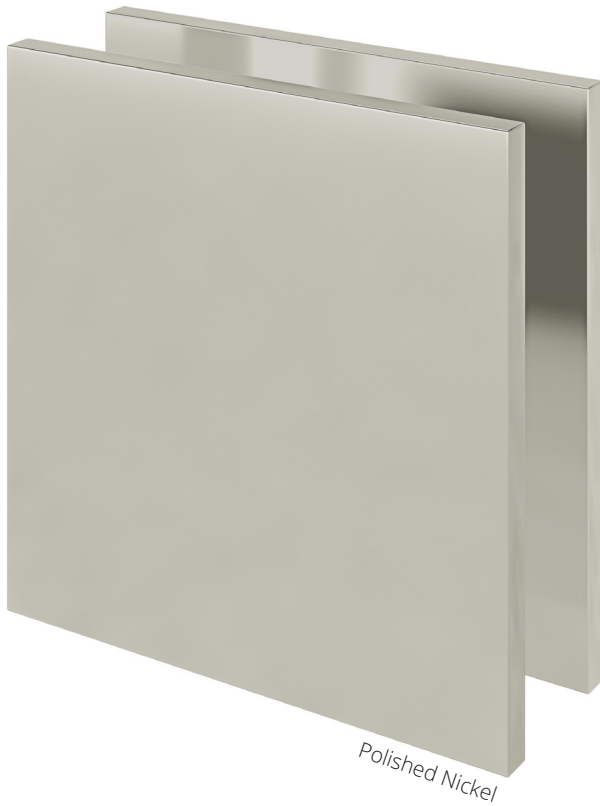
* Available Finishes Not Shown: Chrome, Matte Black, Polished Nickel, Roman Bronze,, Oil Rubbed Bronze, Brushed Nickel, and Champagne Bronze

STYLE HMISU4

(CHG CGTWS)

Wall Mount Clip

Squared Edge



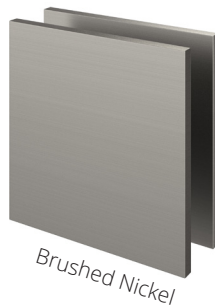
Polished Nickel

- Glazing Thickness: 3/8" to 1/2"
- Dimensions: 2" x 2"
- Material: Brass
- Mounting Type: Glass to Wall

*Lifetime warranty for residential
3 year warranty for hospitality*



Oil Rubbed Bronze



Brushed Nickel



Gold



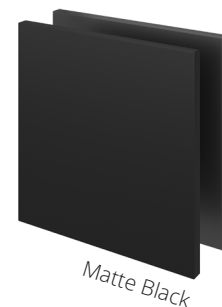
Chrome



Champagne Bronze



Roman Bronze



Matte Black

Make sure to pair with HMI *hinges* and *handles*.

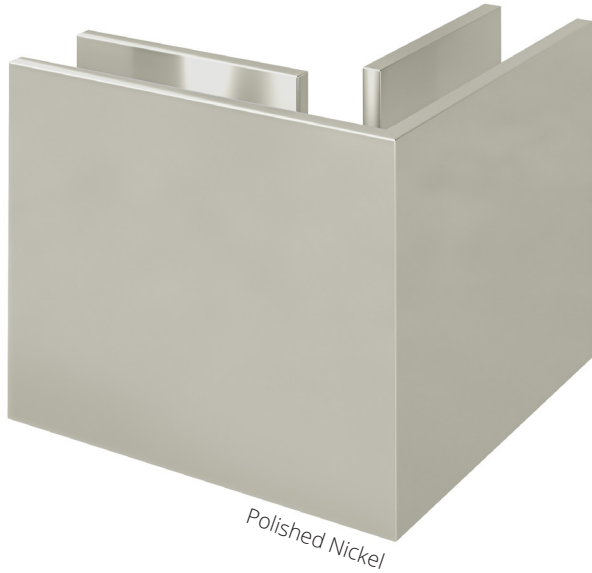
STYLE HMIS90

(CHG C90GTGS)

Clip

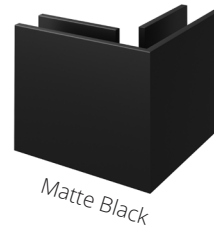
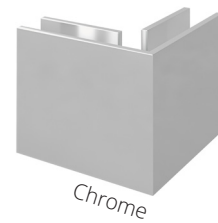
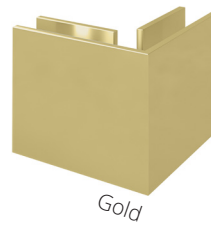
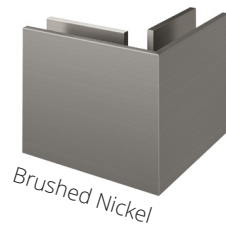
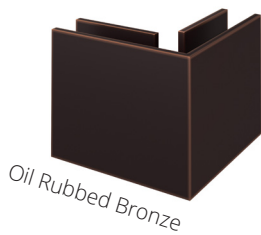
Squared Edge

90° Glass to Glass



- Glazing Thickness: 3/8" to 1/2"
- Dimensions: 2 1/2" x 2 1/2" x 2"
- Material: Brass
- Mounting Type: Glass to Glass

*Lifetime warranty for residential
3 year warranty for hospitality*



Make sure to pair with HMI *hinges* and *handles*.

HMI

STYLE HMIS180

(CHG C180GTGS)

Clip

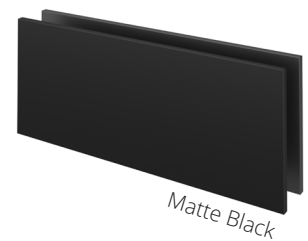
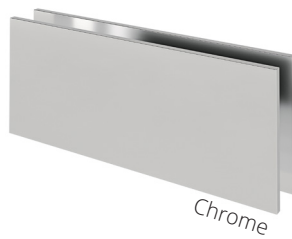
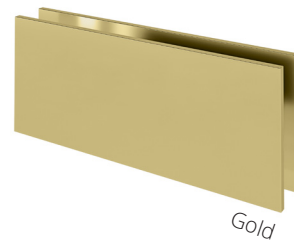
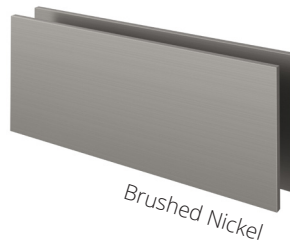
Squared Edge

180° Glass to Glass



- Glazing Thickness: 3/8" to 1/2"
- Dimensions: 2" x 5"
- Material: Brass
- Mounting Type: Glass to Glass

*Lifetime warranty for residential
3 year warranty for hospitality*



Make sure to pair with HMI *hinges* and *handles*.

HMI
INNOVATORS IN GLASS

STYLE HMIND4

(CHG CNDG)

Clip

Squared Edge

No-Drill Wall Clip



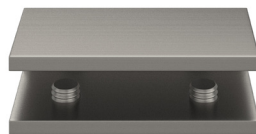
Polished Nickel

- Glazing Thickness: 5/16" to 3/8"
- Dimensions: 1 3/16" x 2 3/8"
- Material: Brass
- Mounting Type: Glass to Wall

*Lifetime warranty for residential
3 year warranty for hospitality*



Oil Rubbed Bronze



Brushed Nickel



Roman Bronze



Chrome



Matte Black

Make sure to pair with HMI *hinges* and *handles*.

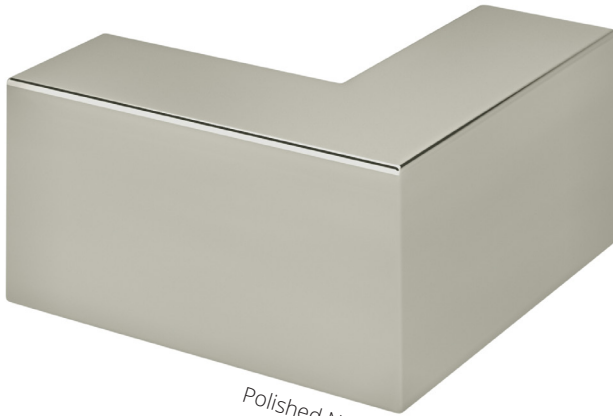
STYLE HMISL90

(CHG CSL90)

Sleeve Over Glass Clamp

Squared Edge

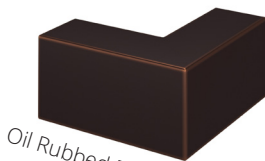
90°



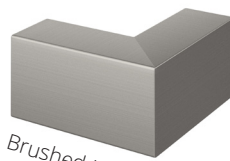
Polished Nickel

- Glazing Thickness: 5/16" to 1/2"
- Dimensions: 2 1/16" x 2 1/16"
- Material: Brass
- Mounting Type: Glass to Glass

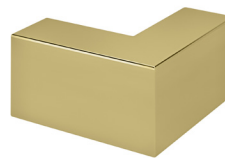
*Lifetime warranty for residential
3 year warranty for hospitality*



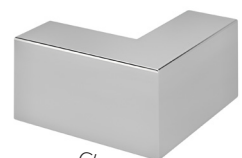
Oil Rubbed Bronze



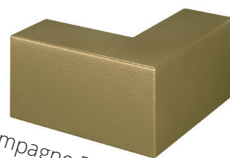
Brushed Nickel



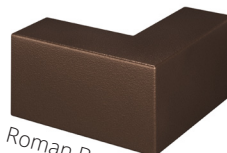
Gold



Chrome



Champagne Bronze



Roman Bronze



Matte Black

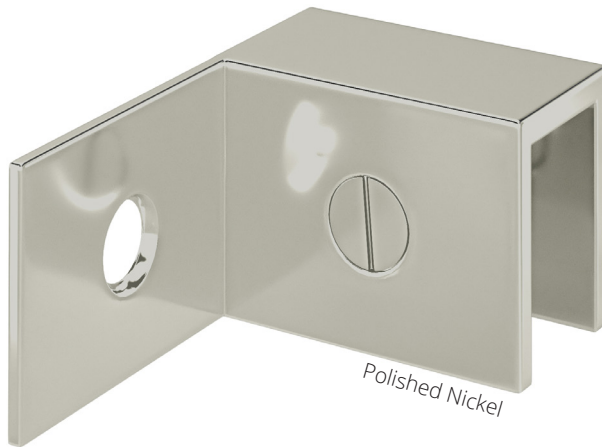
STYLE HMIS37R

(CHG CSL37R)

Sleeve Over Glass Clip

Squared Edge

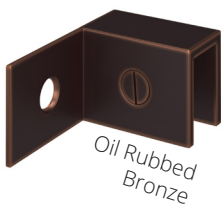
Right Hand



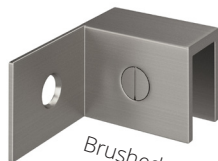
Polished Nickel

- Glazing Thickness: 5/16" to 1/2"
- Dimensions: 1 3/8" x 2"
- Material: Brass
- Mounting Type: Wall Mount

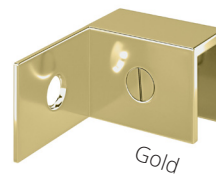
*Lifetime warranty for residential
3 year warranty for hospitality*



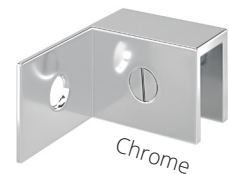
Oil Rubbed
Bronze



Brushed Nickel



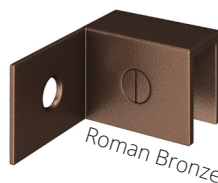
Gold



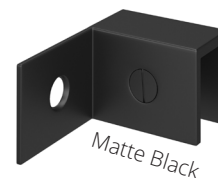
Chrome



Champagne
Bronze



Roman Bronze



Matte Black

Make sure to pair with HMI *hinges* and *handles*.

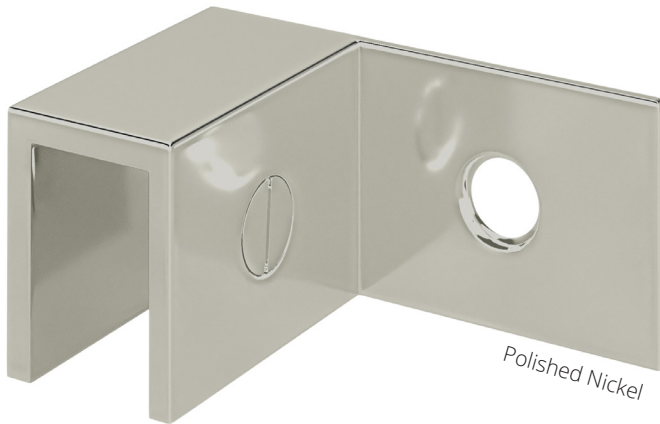
STYLE HMIS37L

(CHG CSL37L)

Sleeve Over Glass Clips

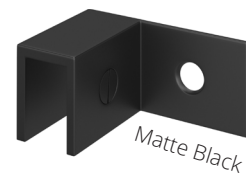
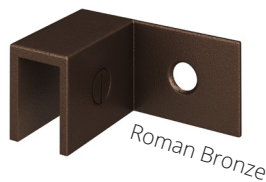
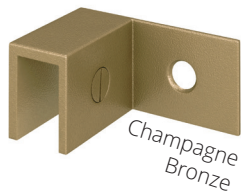
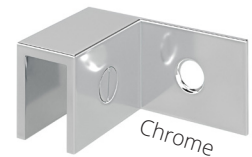
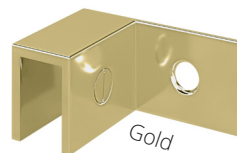
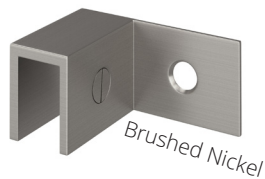
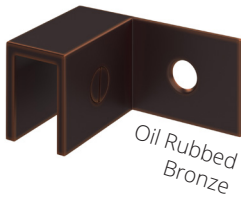
Squared Edge

Left Hand



- Glazing Thickness: 5/16" to 1/2"
- Dimensions: 1 3/8" x 2"
- Material: Brass
- Mounting Type: Wall Mount

*Lifetime warranty for residential
3 year warranty for hospitality*



Make sure to pair with HMI *hinges* and *handles*.

HMI

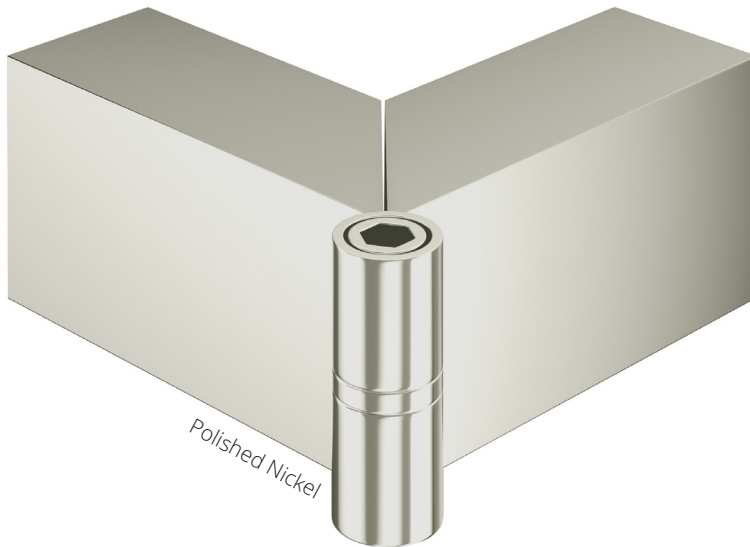
STYLE HMIS91

(CHG CSL91)

Sleeve Over Glass Clips

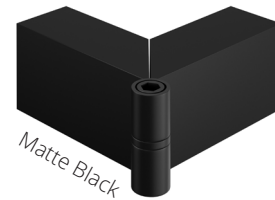
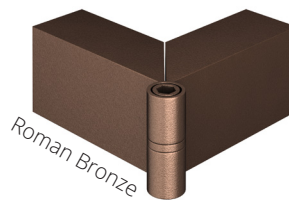
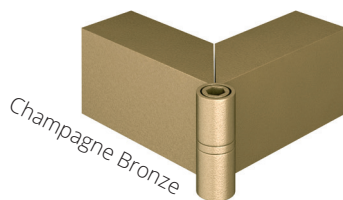
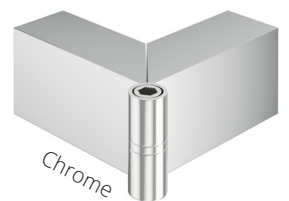
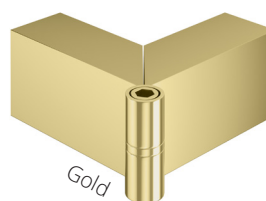
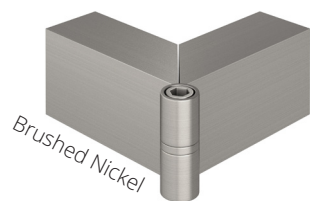
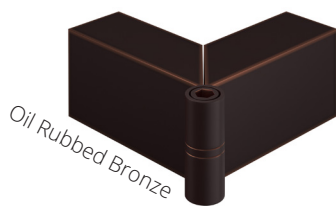
Squared Edge

Adjustable



- Glazing Thickness: 5/16" to 1/2"
- Dimensions: 2 1/8" x 2 1/8"
- Material: Brass
- Mounting Type: Glass to Glass

*Lifetime warranty for residential
3 year warranty for hospitality*



Make sure to pair with HMI *hinges* and *handles*.

HMI
INNOVATORS IN GLASS

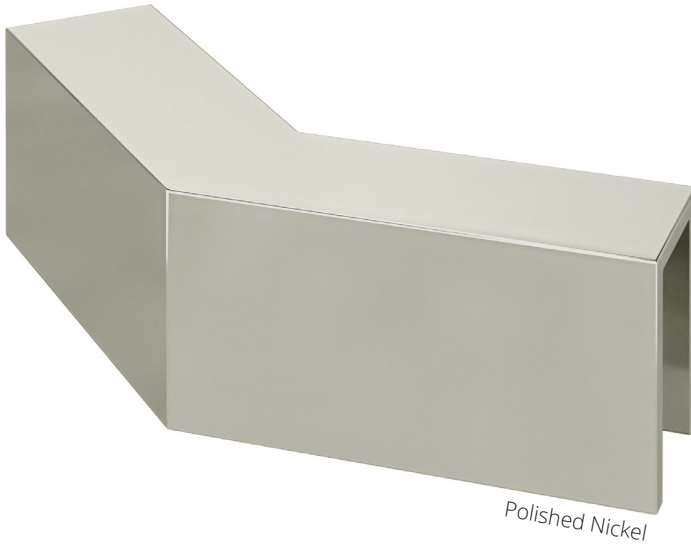
STYLE HMISL135

(CHG CSL135)

Sleeve Over Glass Clips

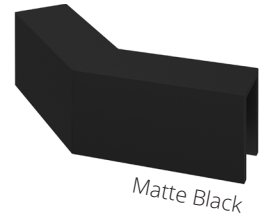
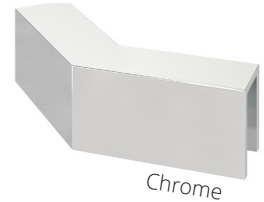
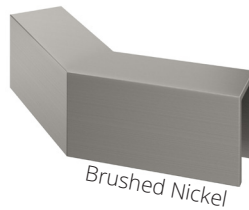
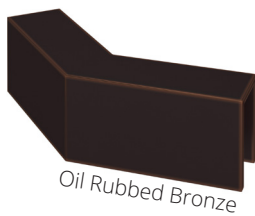
Squared Edge

135°



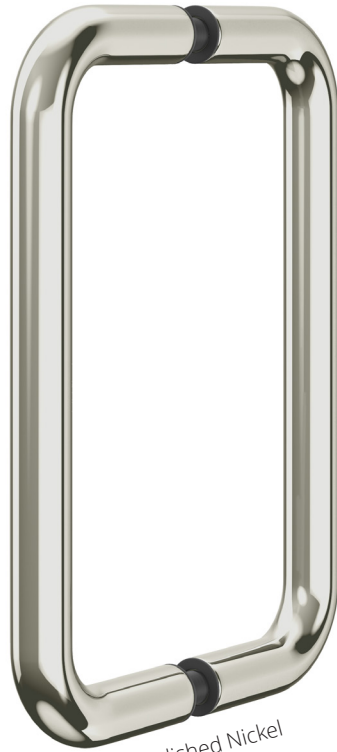
- Glazing Thickness: 5/16" to 1/2"
- Dimensions: 2 1/16" x 2 1/16"
- Material: Brass
- Mounting Type: Glass to Glass

*Lifetime warranty for residential
3 year warranty for hospitality*



Make sure to pair with HMI *hinges* and *handles*.

HMI



Polished Nickel

STYLES: HMI6X6 & HMI8X8

(CHG 6BTB) & (CHG 8BTB)

Pulls

Round

- Glazing Thickness: 1/4" to 1/2"
- Diameter: 3/4"
- Material: Stainless
- Mounting Center to Center: 6" or 8"
- Mounting Type: Glass Mount Back to Back
- Includes soft and rigid plastic washers

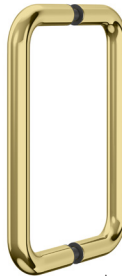
*Lifetime warranty for residential
3 year warranty for hospitality*



Oil Rubbed Bronze



Chrome



Gold



Roman Bronze



Brushed Nickel



Champagne Bronze



Matte Black



Oil Rubbed Bronze Painted

Make sure to pair with HMI *hinges* and *clips*.

HMI



Brushed Nickel

STYLES: HMI6SM & HMI8SM

(CHG 6SM) & (CHG 8SM)

Pulls

Round

- Glazing Thickness: 1/4" to 1/2"
- Diameter: 3/4"
- Material: Stainless
- Mounting Center to Center: 8"
- Mounting Type: Glass Mount

*Lifetime warranty for residential
3 year warranty for hospitality*

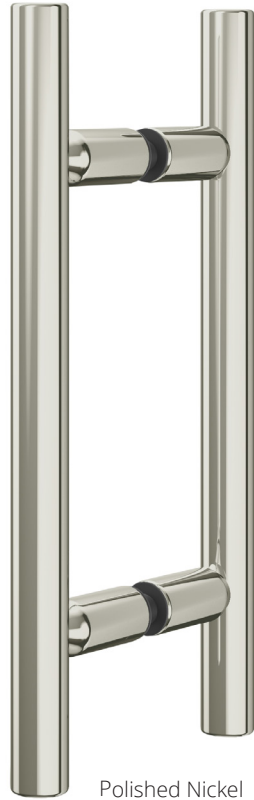


Chrome



Matte Black

Make sure to pair with HMI *hinges* and *clips*.



Polished Nickel

STYLES: HMILP6X6

(CHG LP 6BTB)

Pulls

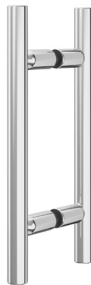
Round - Ladder Style

- Glazing Thickness: 1/4" to 1/2"
- Diameter: 3/4"
- Material: Stainless
- Mounting Center to Center: 6"
- Mounting Type: Glass Mount Back to Back

*Lifetime warranty for residential
3 year warranty for hospitality*



Oil Rubbed Bronze



Chrome



Brushed Nickel



Champagne Bronze

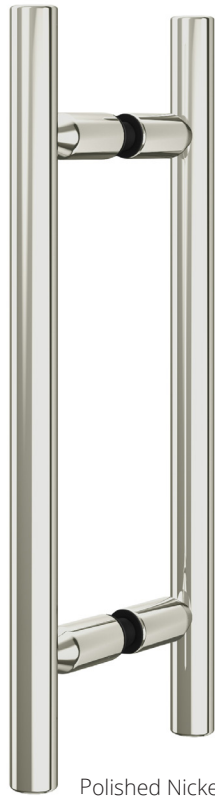


Oil Rubbed Bronze
Painted



Matte Black

Make sure to pair with HMI *hinges* and *clips*



Polished Nickel

STYLES: HMILP8X8

(HMILP8X8)

Pulls

Round - Ladder Style

- Glazing Thickness: 1/4" to 1/2"
- Diameter: 3/4"
- Material: Stainless
- Mounting Center to Center: 8"
- Mounting Type: Glass Mount
Back to Back

*Lifetime warranty for residential
3 year warranty for hospitality*



Oil Rubbed Bronze



Chrome



Gold



Brushed Nickel



Champagne Bronze



Roman Bronze



Matte Black

Make sure to pair with HMI *hinges* and *clips*.



Brushed Nickel

STYLE HMICR6X6

(CHG CR 6BTB)

Pulls

Round

Crescent Style

- Glazing Thickness: 1/4" to 1/2"
- Diameter: 3/4"
- Material: Stainless
- Mounting Center to Center: 6"
- Mounting Type: Glass Mount
Back to Back

*Lifetime warranty for residential
3 year warranty for hospitality*



Oil Rubbed Bronze



Chrome



Matte Black



Oil Rubbed Bronze
Painted

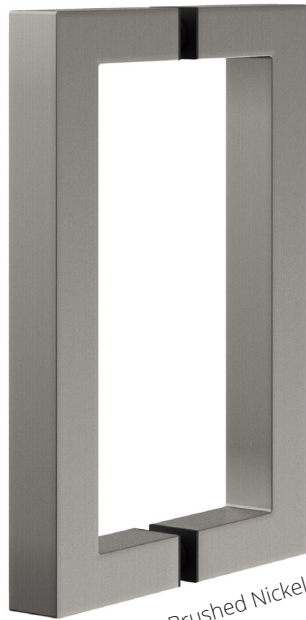
HMI

STYLES: HMISQ6X6

(CHG SQ 6BTB)

Pulls

Square



Brushed Nickel

- Glazing Thickness: 1/4" to 1/2"
- Diameter: 3/4"
- Material: Brass
- Mounting Center to Center: 6"
- Mounting Type: Glass Mount Back to Back

*Lifetime warranty for residential
3 year warranty for hospitality*



Oil Rubbed Bronze



Chrome



Matte Black



Oil Rubbed Bronze
Painted

Make sure to pair with HMI *hinges* and *clips*

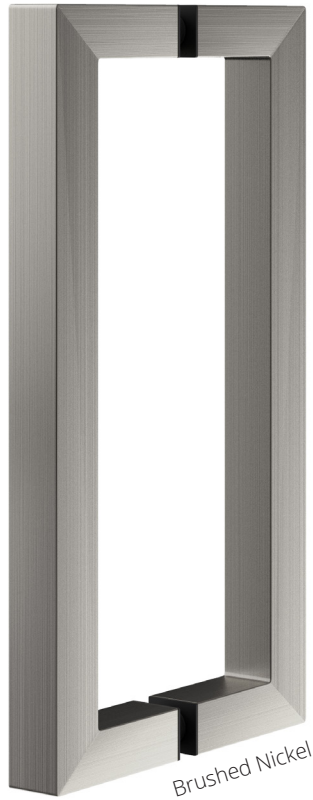
HMI

STYLES: HMISQ8X8

(CHG SQ 8BTB)

Pulls

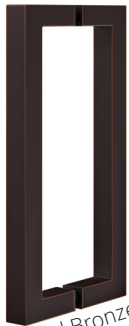
Square



Brushed Nickel

- Glazing Thickness: 1/4" to 1/2"
- Diameter: 3/4"
- Material: Brass
- Mounting Center to Center: 8"
- Mounting Type: Glass Mount Back to Back

*Lifetime warranty for residential
3 year warranty for hospitality*



Oil Rubbed Bronze



Chrome



Matte Black



Champagne Bronze

Make sure to pair with HMI *hinges* and *clips*.

STYLE HMI30WK

(CHG CWK)

Metal Washers

- Material: Brass



Polished Nickel

*Lifetime warranty for residential
3 year warranty for hospitality*



Oil Rubbed Bronze



Chrome



Gold



Roman Bronze



Champagne Bronze



Brushed Nickel



Matte Black



Oil Rubbed Bronze
Painted

Make sure to pair with HMI *hinges* and *clips*.

STYLES: HMITB16,
HMITB18, HMITB20,
HMITB22, HMITB24,
HMITB27 & HMITB30
(CHG TB16), (CHG TB18), (CHG TB20), (CHG
TB22), (CHG TB24), (CHG TB27) & (CHG TB30)
Towel Bars
Round

- Glazing Thickness: 1/4" to 1/2"
- Diameter: 3/4"
- Material: Stainless
- Mounting Type: Glass Mount
Single sided
- Concave caps included

*Lifetime warranty for residential
3 year warranty for hospitality*



Brushed Nickel



Concave caps



Oil Rubbed Bronze



Chrome



Gold



Roman Bronze



Oil Rubbed Bronze
Painted

NOTE: Color options vary by size. Please inquire.

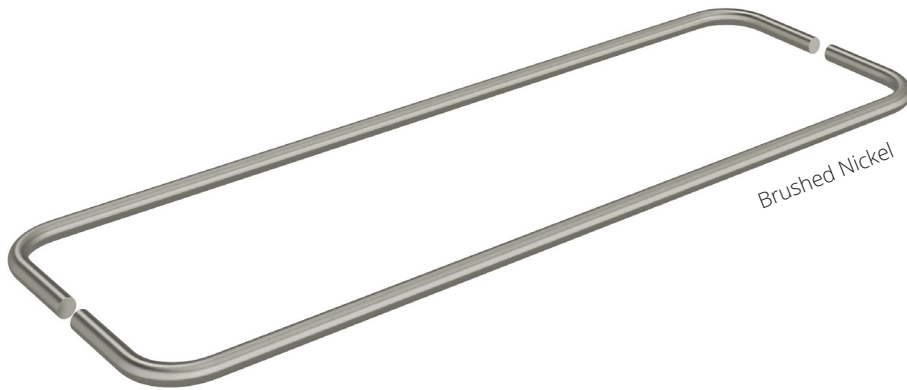
Make sure to pair with HMI *hinges* and *clips*.

HMI

STYLES: HMIBTB18X18 & HMIBTB24X24

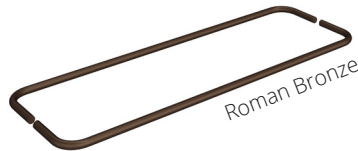
(CHG 18BTB) & (CHG 24BTB)

Towel Bars
Round



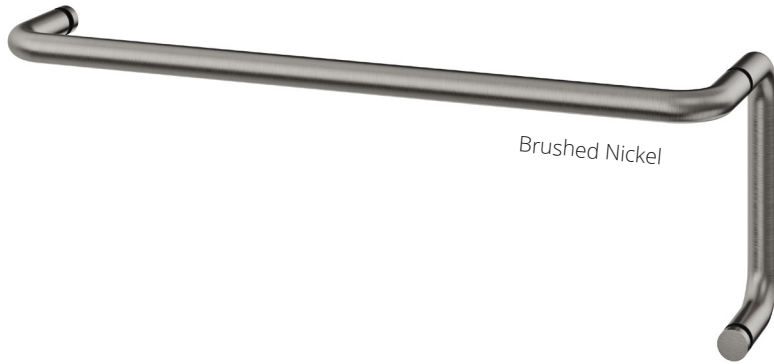
- Glazing Thickness: 1/4" to 1/2"
- Diameter: 3/4"
- Material: Stainless
- Mounting Type: Glass Mount Back to Back

*Lifetime warranty for residential
3 year warranty for hospitality*



NOTE: Color options vary by size. Please inquire.

Make sure to pair with HMI *hinges* and *clips*.



Brushed Nickel

STYLES:

HMIBTB6X18

HMIBTB6X20

HMIBTB6X22

HMIBTB6X24

(CHG TB618), (CHG TB620), (CHG TB622)

& (CHG TB624)

Towel Bars

Round

- Glazing Thickness: 1/4" to 1/2"
- Diameter: 3/4"
- Material: Stainless
- Mounting Type: Glass Mount Back to Back

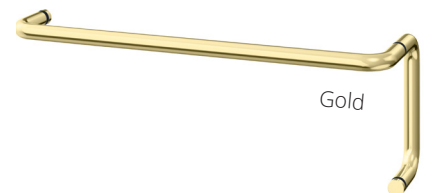
*Lifetime warranty for residential
3 year warranty for hospitality*



Chrome



Oil Rubbed Bronze



Gold



Roman Bronze



Oil Rubbed Bronze
Painted

NOTE: Color options vary by size. Please inquire.

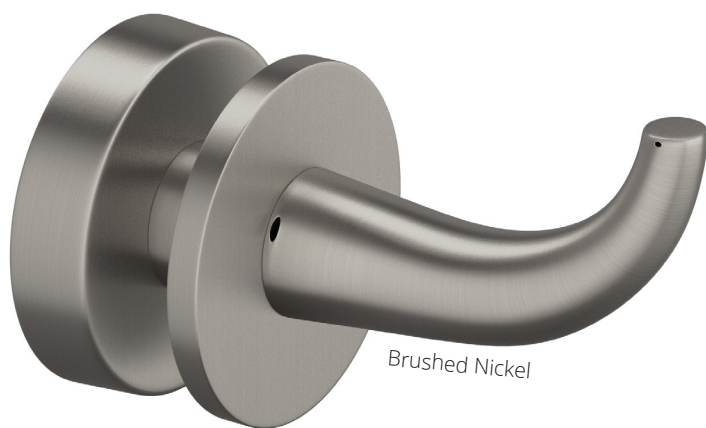
Make sure to pair with HMI *hinges* and *clips*

STYLE HMIRH

(CHG CRH)

Hooks

Round



Brushed Nickel

- Glazing Thickness: 5/16" to 1/2"
- Material: Brass
- Mounting Type: Through-Glass, UV Adhesive, or Wall Mount

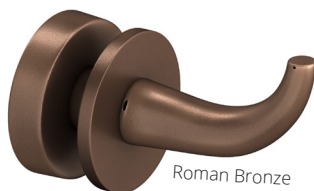
*Lifetime warranty for residential
3 year warranty for hospitality*



Chrome



Oil Rubbed Bronze



Roman Bronze



Matte Black

Make sure to pair with HMI *hinges* and *clips*.

STYLE HMIKSM

(CHG KSM)

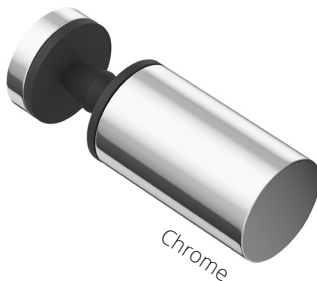
Knobs

Round



- Glazing Thickness: 1/4" to 1/2"
- Diameter: 3/4"
- Material: Stainless
- Mounting Type: Glass Mount - Back To Back
- Concave caps included

*Lifetime warranty for residential
3 year warranty for hospitality*



Make sure to pair with HMI *hinges* and *clips*.

HMI

STYLE HMIKCBTB

(CHG KCBTB)

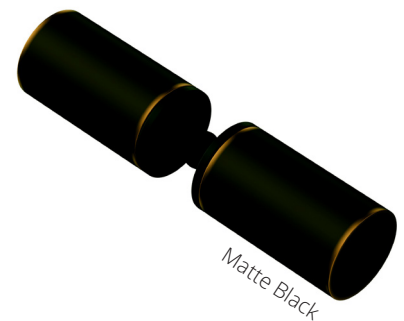
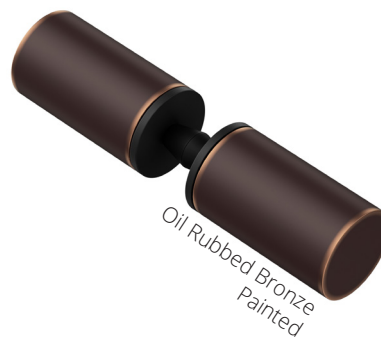
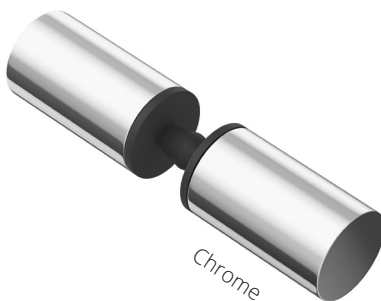
Cushioned Knobs

Round



- Glazing Thickness: 1/4" to 1/2"
- Diameter: 3/4"
- Material: Stainless
- Mounting Type: Glass Mount - Back To Back

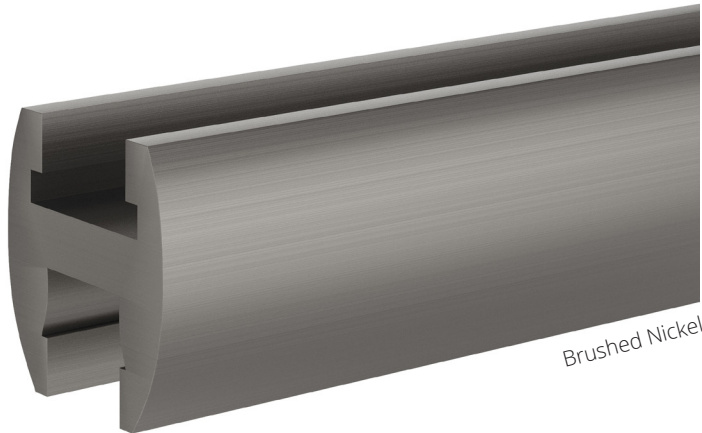
*Lifetime warranty for residential
3 year warranty for hospitality*



Make sure to pair with HMI *hinges* and *clips*.

STYLE ZSS4101A

Heavy Shower Door
Headers



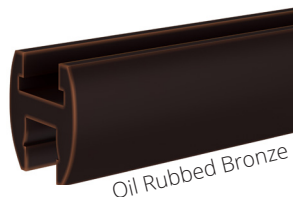
Brushed Nickel

- Glazing Thickness: 3/8" to 1/2"
- Dimensions:
1 1/4"h x 1 1/4"w x 144"l
- Material: Aluminum
- Profile: Curved

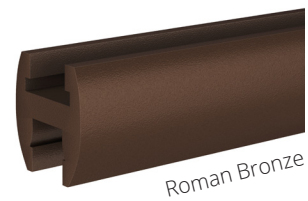
*Lifetime warranty for residential
3 year warranty for hospitality*



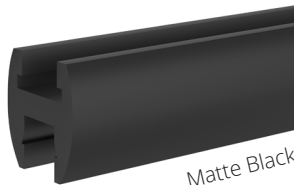
Chrome



Oil Rubbed Bronze



Roman Bronze



Matte Black

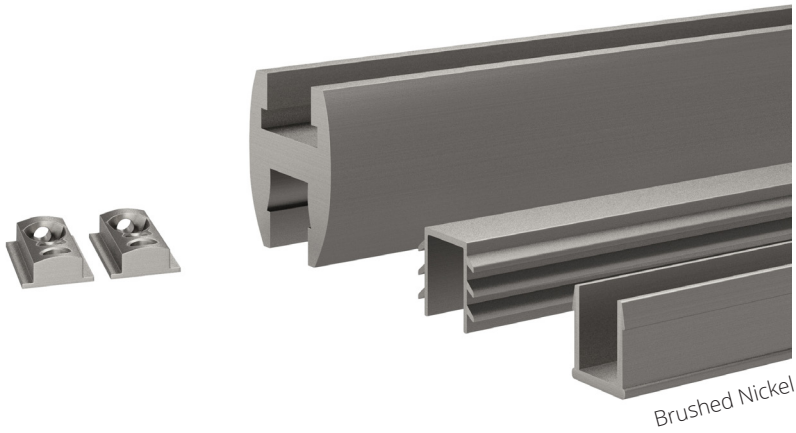


Oil Rubbed Bronze
Painted

Make sure to pair with HMI *handles* and *clips*.

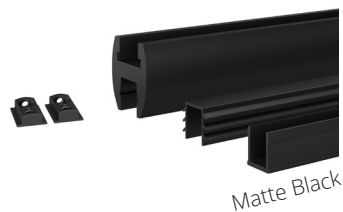
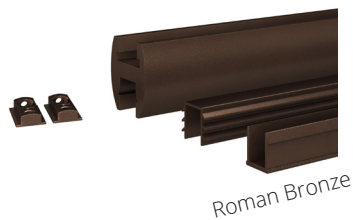
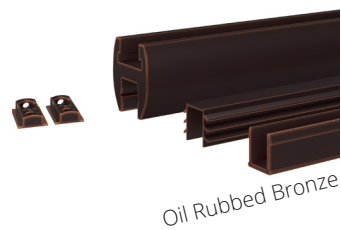
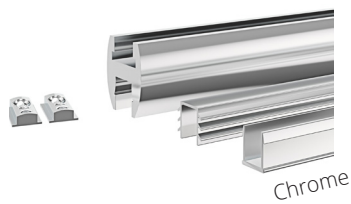
HMI

STYLES: CHGCHK144 & CHGCHK72 Heavy Glass Header Kit



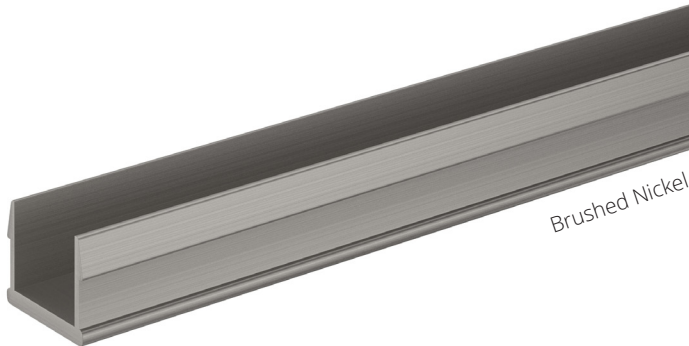
- Glazing Thickness: 3/8 - 1/2"
- Length: 144" or 72"
- Material: Aluminum

*Lifetime warranty for residential
3 year warranty for hospitality*



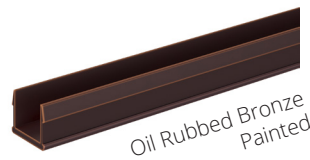
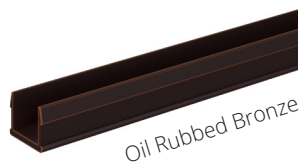
Make sure to pair with HMI *handles* and *clips*.

STYLE ZSS4102 Snap in Filler



- Length: 122"
- Material: Aluminum
- Profile: Flat

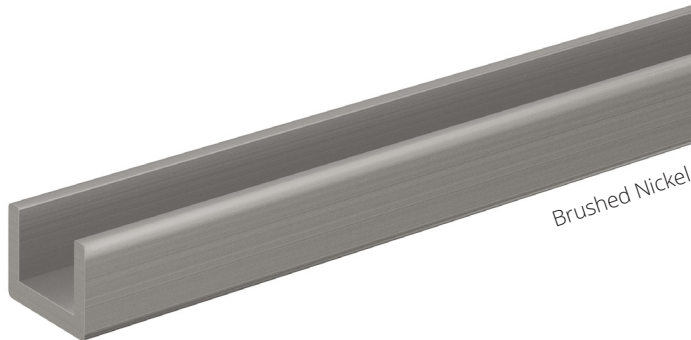
*Lifetime warranty for residential
3 year warranty for hospitality*



Make sure to pair with HMI *handles* and *clips*.

STYLE ZSS4103

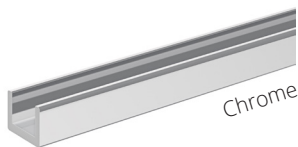
Shallow U-Channel
for 3/8" Glass



Brushed Nickel

- Length: 144"
- Material: Aluminum
- Profile: 3/8" Deep U-Channel

*Lifetime warranty for residential
3 year warranty for hospitality*



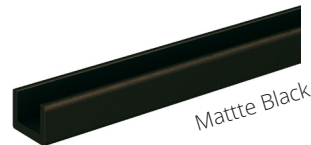
Chrome



Oil Rubbed Bronze
Painted



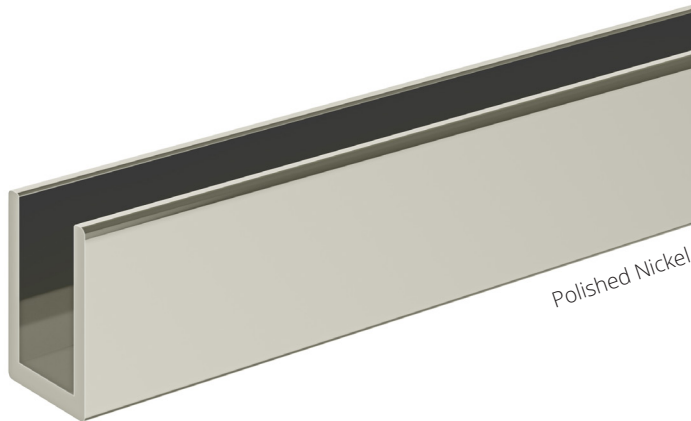
Roman Bronze



Matte Black

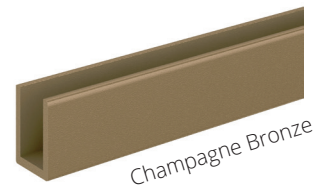
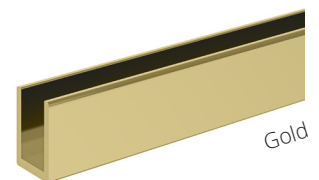
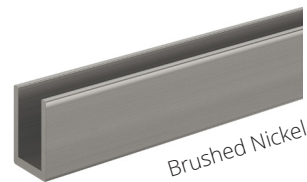
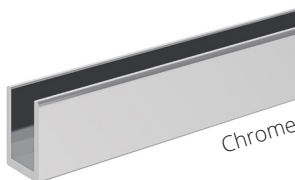
Make sure to pair with HMI *handles* and *clips*.

STYLE ZSS4104 Deep U-Channel for 3/4" Glass



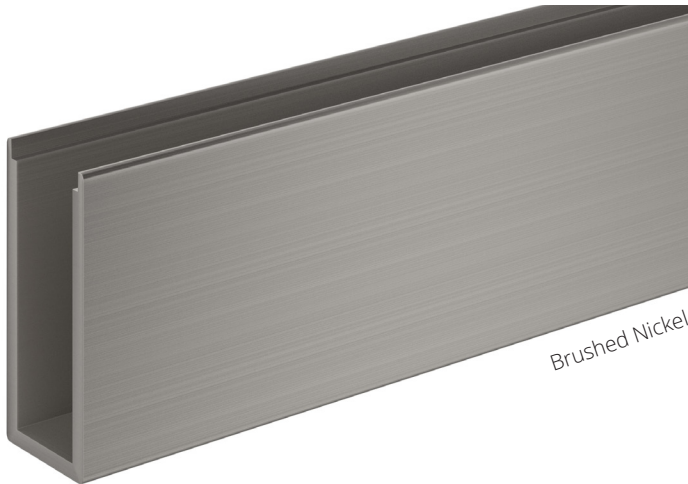
- Length: 144"
- Material: Aluminum
- Profile: 3/8" Deep U-Channel

*Lifetime warranty for residential
3 year warranty for hospitality*



Make sure to pair with HMI *handles* and *clips*.

STYLE ZSS4504 Extra Deep U-Channel for 3/8" Glass



Brushed Nickel

- Length: 144"
- Material: Aluminum
- Profile: 1 1/4" Deep U-Channel

*Lifetime warranty for residential
3 year warranty for hospitality*



Chrome



Roman Bronze



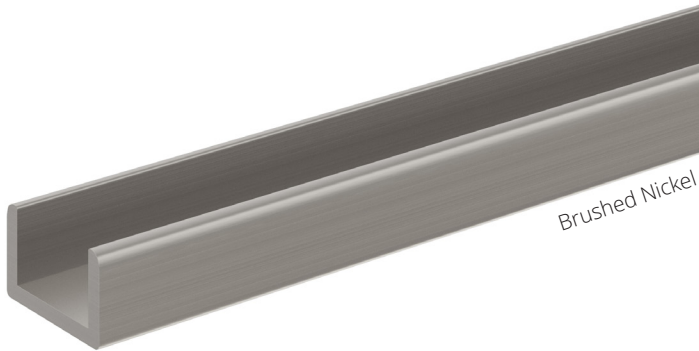
Matte Black

Make sure to pair with HMI *handles* and *clips*.

HMI

STYLE ZSS5103

Shallow U-Channel
for 1/2" Glass



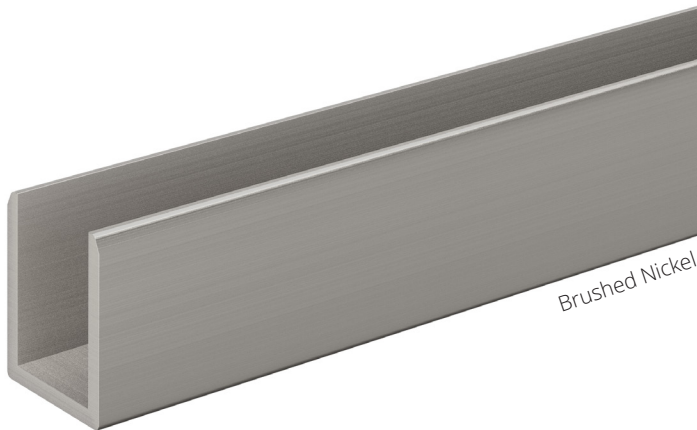
- Length: 144"
- Material: Aluminum
- Profile: 3/8" Deep U-Channel

*Lifetime warranty for residential
3 year warranty for hospitality*



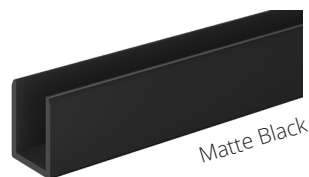
Make sure to pair with HMI *handles* and *clips*.

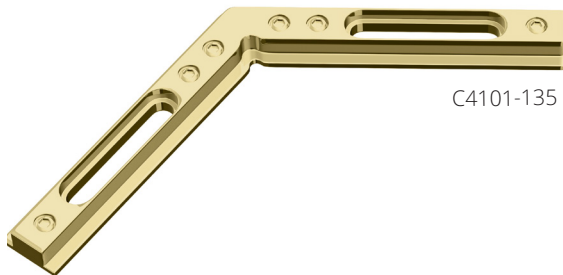
STYLE ZSS5104 Deep U-Channel for 1/2" Glass



- Length: 144"
- Material: Aluminum
- Profile: 3/4" Deep U-Channel

*Lifetime warranty for residential
3 year warranty for hospitality*





STYLES:

C4101-A

C4101-135

C4104-90

C4101-W

Standard Corner, Adjustable
Header Brackets

- Material: Brass
- Profile: Flat

*Lifetime warranty for residential
3 year warranty for hospitality*